



# What's On

Berkshire Archaeological Society - September 2025

To view a pdf version of this message click [here](#)

## News



### Post-excavation at Wickham House

After the excavation comes the post-excavation or “post-ex”. Without this vital work to document and analyse what has been found we will have just dug a hole and destroyed archaeology. Only by classifying and dating finds will we be able to understand the sequence of construction and the probable uses of the features that have been uncovered over the course of 41 days.

An army of volunteers has already started on the many types of finds, from CBM and pottery to metalwork and bone.

If you would like to take part, please send an email to Keith Abbott at: [keefandtrace@hotmail.com](mailto:keefandtrace@hotmail.com)

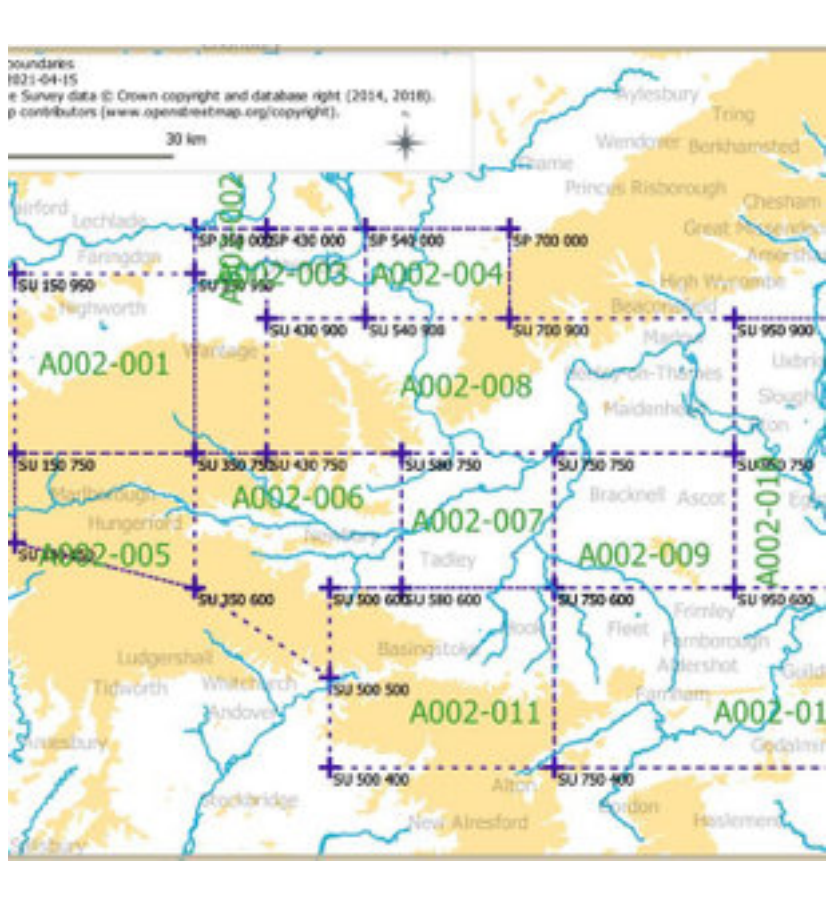
## Upcoming Events



Tuesday 2nd September 2025  
**Finds Group**  
 Agenda: TBA

All welcome.  
 7:30pm at Woosehill Community Hall,  
 RG41 3DA.

[See website](#)



Wednesday 3rd September 2025  
**Study Group**  
 Agenda: TBA

All welcome.  
 2:30pm at Woosehill Community Hall,  
 RG41 3DA.

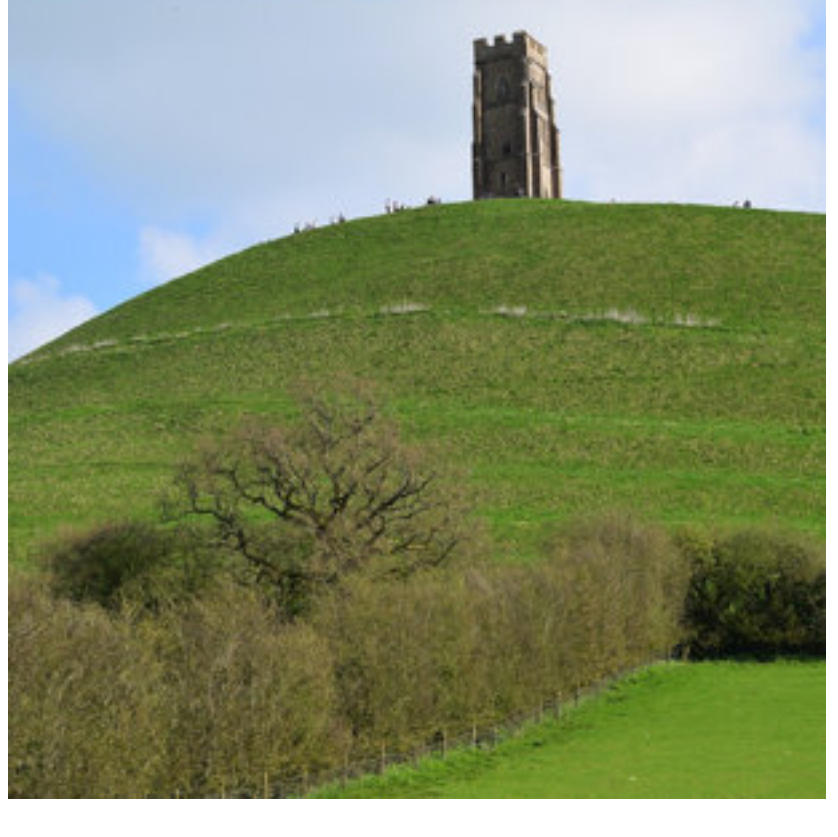
[See website](#)



Wednesday 10th September 2025  
**Pub Lunch**

All welcome for an informal chat. If you want to join us please notify Tim Lloyd at [tim.lloyd@berksarch.co.uk](mailto:tim.lloyd@berksarch.co.uk) by the Saturday before the lunch.

12:30pm at The Wheelwright's Arms,  
 Davis Way, Hurst, Reading, RG10 0TR.



Saturday 20th September 2025  
**BAS Lecture: Medieval Ritual Landscape Project**  
 By Dr Rob Webley, University of Reading

2:00 for 2:30 pm at RISC (2:15 on zoom)

[See website](#)



Saturday 11th October 2025  
**Archaeology in Berkshire 2025: BAS Day School**  
 Talks about the latest projects in Berkshire. £15 online or on the door

10am to 4pm at St Nicolas Hall,  
 Newbury

[See website](#)

## Past Events

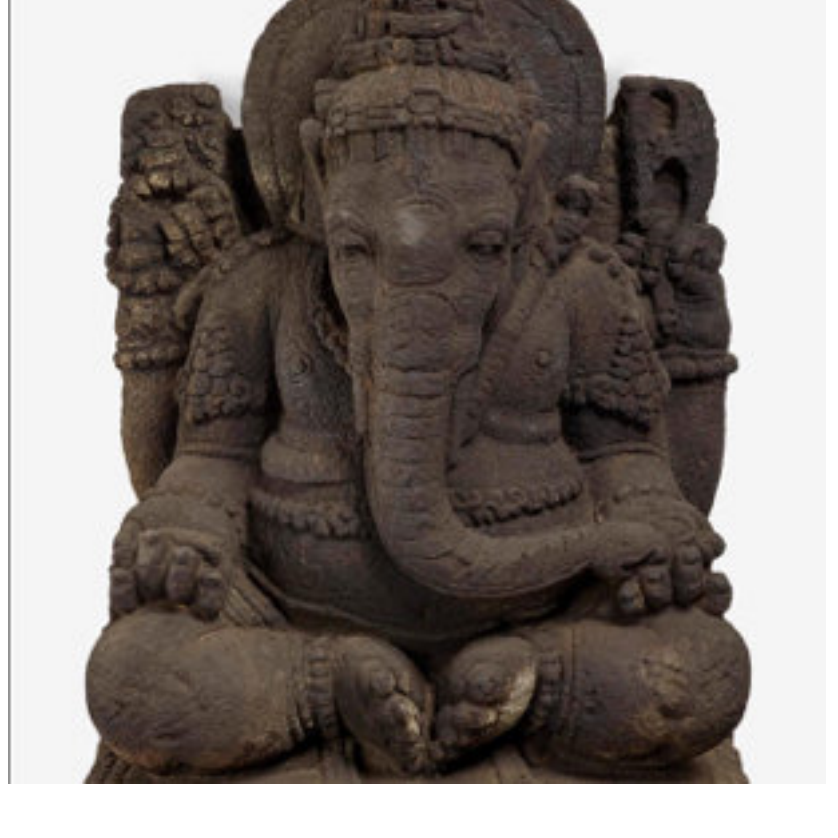


Thursday 14h August 2025  
**Wickham House - Introduction to post-ex activities**  
 By Keith Abbott

See headline article for details

[Project web page](#)

## Other News



Until 19th October 2025  
**British Museum - Ancient India: living traditions**

Reaching back more than 2,000 years, this new exhibition explores the origins of Hindu, Jain and Buddhist sacred art in the ancient and powerful nature spirits of India, and the spread of this art beyond the subcontinent.

[See website](#)

### Local Societies

- See the links below of details of their activities:
- [Berkshire Archaeology Research Group](#)
  - [Maidenhead Archaeological and Historical Society](#)
  - [Marlow Archaeology Group](#)
  - [South Oxfordshire Archaeological Group](#)
  - [Thames Valley Ancient Egypt Society](#)

**Berkshire Archaeological Society**  
 Chair: Andrew Hutt [chair@berksarch.co.uk](mailto:chair@berksarch.co.uk)  
 General Enquiries: [info@berksarch.co.uk](mailto:info@berksarch.co.uk)  
 Website: <https://berksarch.co.uk>

You received this email because you are a member of the society. For enquiries about your membership status contact the [Membership Secretary](#)

[View email in browser](#)

[update your preferences](#) or [unsubscribe](#)

