

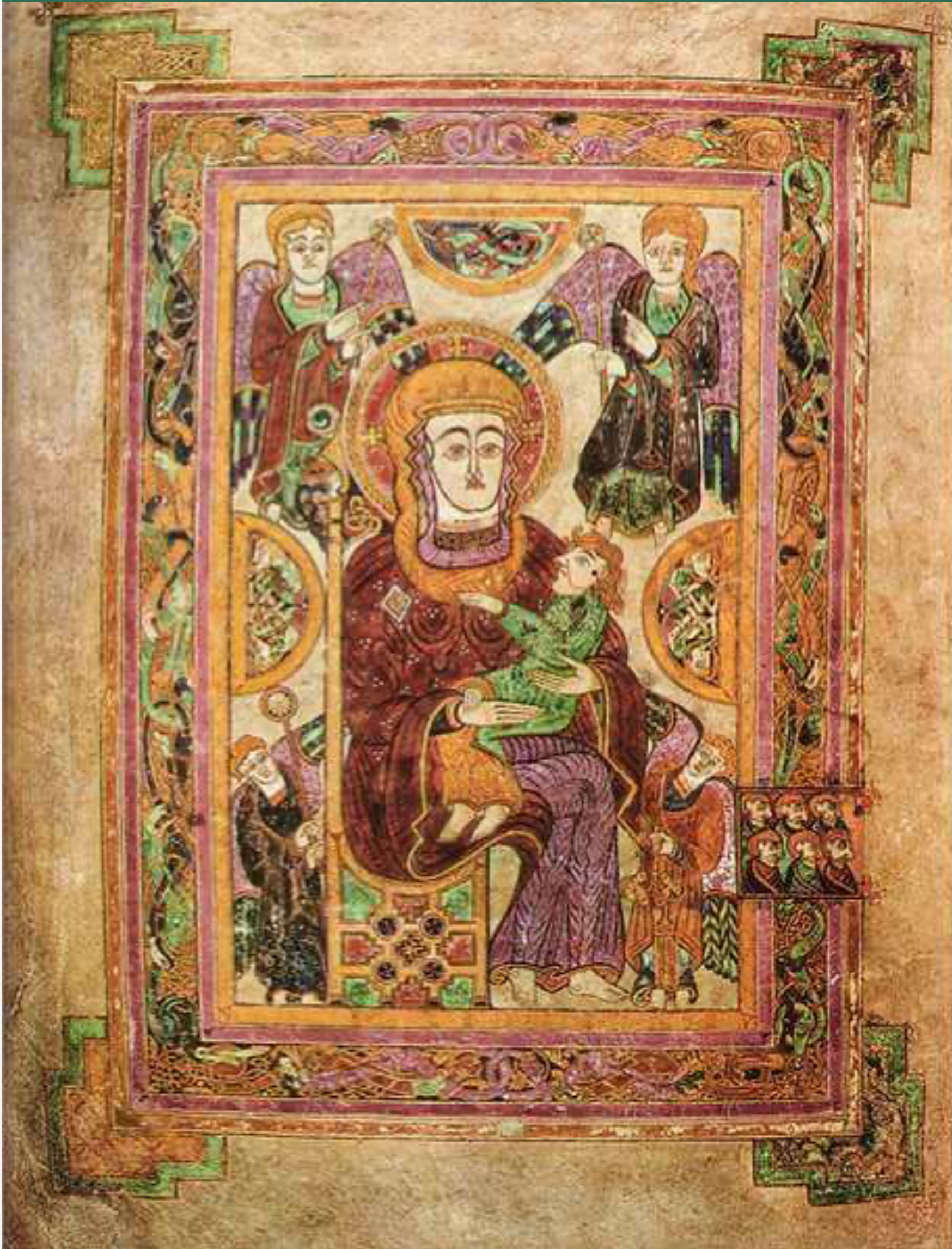


# What's On

Berkshire Archaeological Society - December 2025

To view a pdf version of this message click [here](#)

## News



### Yule or Christmas?

Christmas is from the Saxon "Cristesmaessa", a word first recorded in 1038.

The precise date of Christ's birth was decided as 25th December by Pope Julius I in the fourth century, long before the settlement of England by Germanic peoples. They arrived as pagans and celebrated the festival of Yule, associated with the Winter equinox. Conversion to Christianity during the 6th century saw the festival rebranded as the birth of Christ. However, it was never as important as Easter. Read more [here](#)

Whichever festival you prefer, come and celebrate with us on December 13th (see below)

Image: Madonna and child from the Book of Kells

## Upcoming Events



Tuesday 2nd December 2025

### Finds Group

This meeting will discuss writing the project and pottery reports on Blounts Court.

All welcome.  
7:30pm at Woosehill Community Hall, RG41 3DA.

[See website](#)



Wednesday 3rd December 2025

### Study Group

This meeting is a presentation by Keith Abbott on getting involved in the interpretation of the Wickham Excavations

All welcome.  
2:30pm at Woosehill Community Hall, RG41 3DA.

[See website](#)



There will be no pub lunch this month due to the proximity to Christmas.



Saturday 13th December 2025

### BAS Christmas Buffet and talks by members

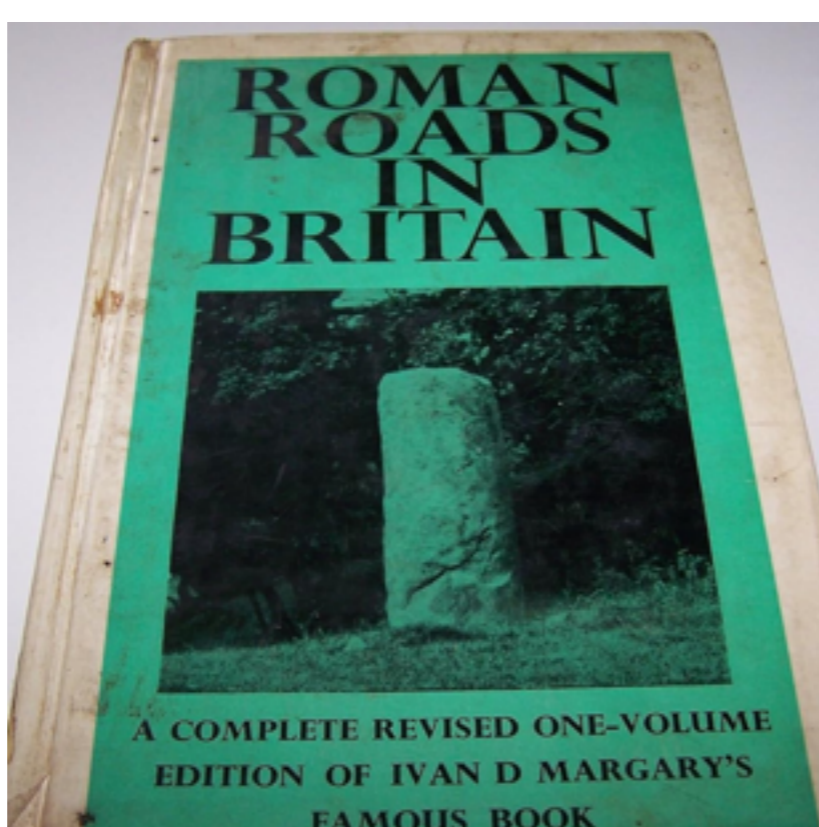
Mosaics of Tunisia by *Tim Lloyd*  
How Glass Evolved from Roman to Modern by *Peter Clifford*

*Wine and food will be served!*

2:00 to 5:00pm at RISC (no zoom)

[See website](#)

## Past Events



Saturday 15th November 2025

### BAS AGM & Lecture

We apologise for not bringing you the advertised lecture. This will be rescheduled for 2026.

Thanks to Keith Abbott for stepping in and talking about the results from Wickham House.

## Other News



2nd to 24th December 2025: **Reading Museum**

### The Forgetful Elf and the Missing Reindeer Trail

Do you have young children to entertain? Follow this fun, festive trail through the Museum galleries with our favourite Elf! Can you spot the clues and help him find Father Christmas' missing reindeer?

[See website](#)

### Local Societies

- See the links below of details of their activities:
- [Berkshire Archaeology Research Group](#)
- [Maidenhead Archaeology and Historical Society](#)
- [Marlow Archaeology Group](#)
- [South Oxfordshire Archaeological Group](#)
- [Thames Valley Ancient Egypt Society](#)

### Berkshire Archaeological Society

Chair: Andrew Hutt [chair@berksarch.co.uk](mailto:chair@berksarch.co.uk)  
General Enquiries: [info@berksarch.co.uk](mailto:info@berksarch.co.uk)  
Website: <https://berksarch.co.uk>

You received this email because you are a member of the society. For enquiries about your membership status contact the [Membership Secretary](#)

[View email in browser](#)

[update your preferences](#) or [unsubscribe](#)

